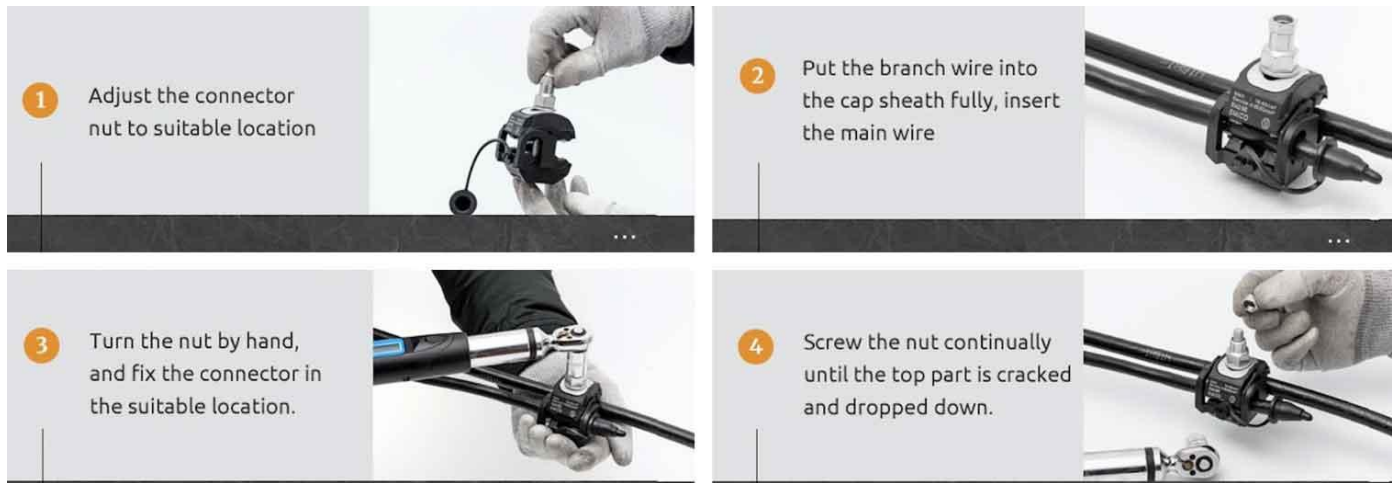


Overview

The Aerial Bundle Cable Insulation Piercing Connector (IPC) is used to establish a tap connection from low voltage ABC (Aerial Bundled Conductors) to a low voltage aluminium alloy or copper bare main conductor. It is widely used for Low Voltage Aerial Bundled Conductor (LV ABC) lines up to 1KV.

Arc surface design , apply to connection with the same (different) diameter, wide connection scope;The blades of the insulation piercing connectors are made of tin-plated copper or tin-plated brass or aluminium alloy allowing connections to Al or Cu conductors;The shell is made of high-quality insulation and flame retardant material, the shell is hard and not easy to break, corrosion-resistant, aging-resistant, much more durable;A single torque control nut draws the two parts of the connector together and shears off when the teeth have pierced the insulation and made contact with the conductor strands.

Application: Secondary URD Cable. Secondary underground distribution cables are used to run power from a pad mounted transformer to the service entry or meter of a structure. The cables are rated for installation in underground duct or directly buried in earth. They are offered in single conductor, duplex, triplex, and quadruplex.



Parameter

Type	Main Line (mm ²)	Tap Line (mm ²)
JBC-1	35-70	6-35
JBC-2	35-120	35-120
JBC-3	50-240	50-240